



Specification Sheet

Sizes	Metric	Imperial
Size 0	0.9 x 1.8 m	3' x 5'11"
-	-	-
Size 2	1.7 x 2.4 m	5'7" x 7'10"
Size 3	2 x 3 m	6'7" x 9'10"
Size 3.5*	2.5 x 3.5 m	8'2" x 11'6"
-	-	-
-	-	-

* Coal & Limestone only

Weave Height	Composition
1 cm (3/8")	100% Recycled PET

End Finish	Use Purpose
Turnover	Indoor, Outdoor

Construction

Hand woven flat weave. Handmade in India under Fair Trade standards.

Notes

Custom size available.
Max. size 4 x 10 m (13'2" x 32'10")

Suitability

- Residential
- Light commercial project
- Hall runners
- Direct sunlight
- Outdoors

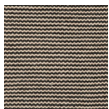
Areas of Use



Colours & Codes



DNE-AS/OA
Ash &
Oatmeal



DNE-CO/LS
Coal &
Limestone

Care Instructions

Vacuum your rug regularly as shedding of loose fibres will occur with a new rug. Promptly clean spills by blotting with a clean, undyed cloth. Do not dry clean or use harsh chemicals that could damage or fade your rug. Never fold your rug for storage or keep in an airtight bag. Ensure your rug has been dried properly after becoming wet. Professional cleaning is recommended on occasion to ensure the long life of your rug.

Please refer to our website for more information: armadillo-co.com

Manufacturing Variations

Size - Can vary by +/- 3%.

Colour - Every effort is made to ensure there is minimal colour variation however some variation can be expected.

Pop ups - Due to the nature of weaving, there will be short fibres popping up while the rug settles. These can be trimmed or pushed through.